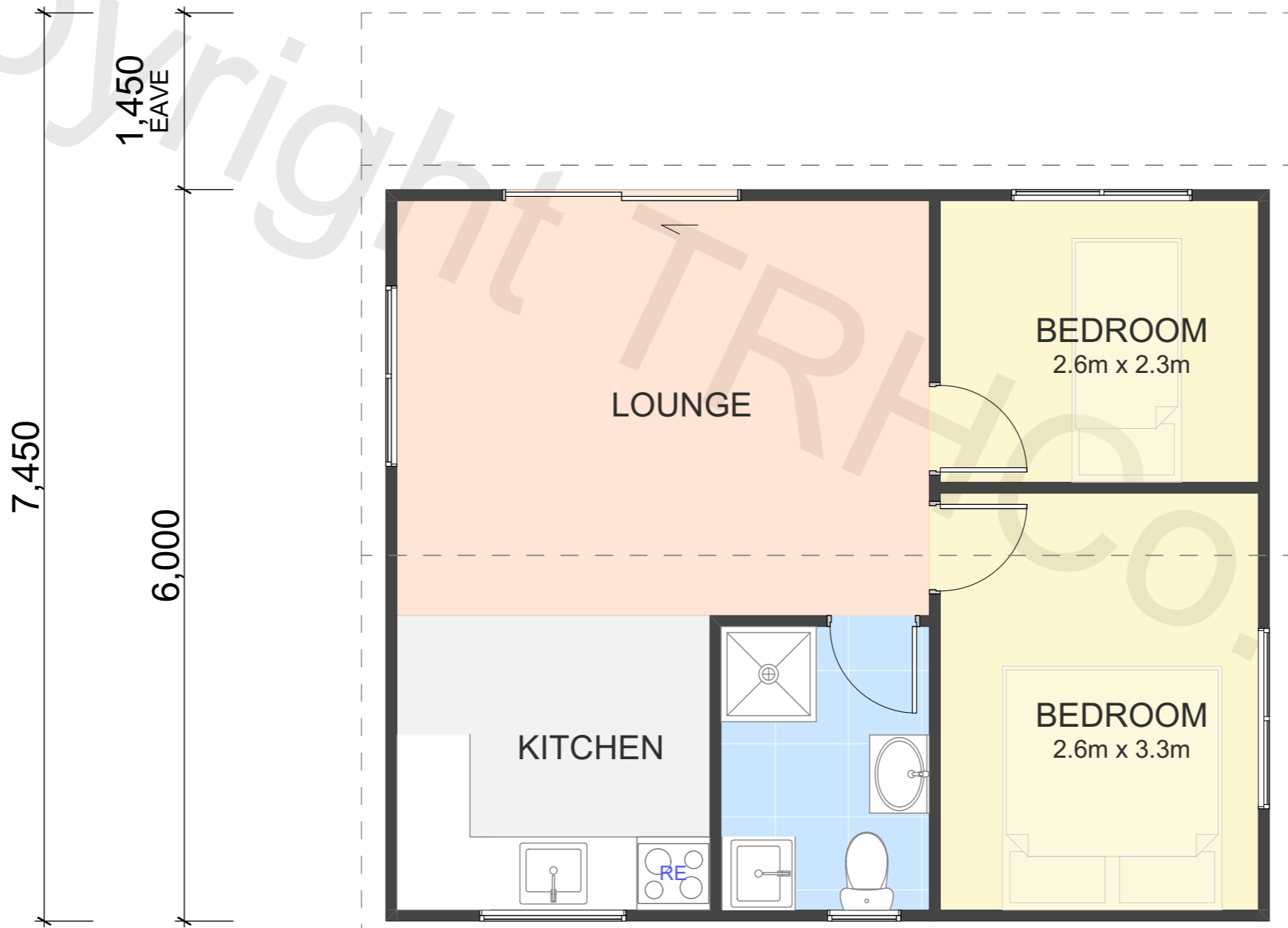
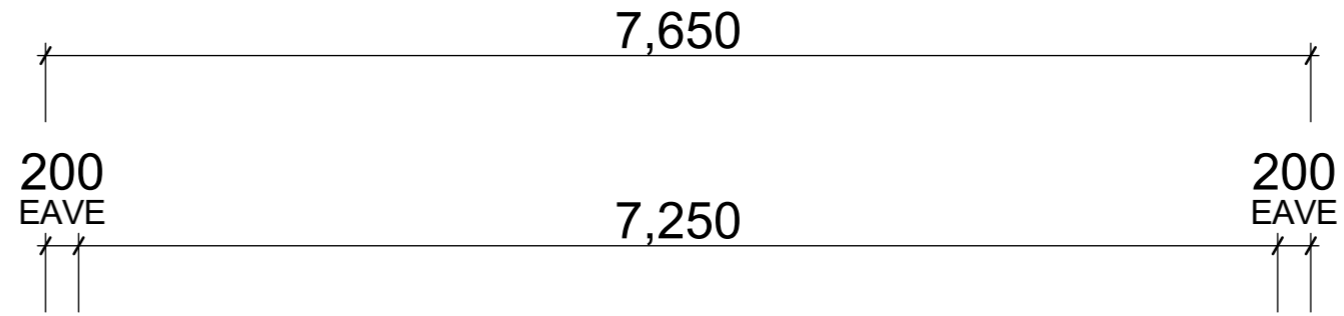


Copyright TRHCo Ltd



 ITEMS FOR REMOVAL / DEMOLITION

FLOOR AREA (APPROX)	44m ²
BRANZ Maps information	
Wind Zone:	Very High
Earthquake Zone:	1
Corrosion Zone:	C

PROPERTY ID: 62MASSEY

DISCLAIMER
 The Relocatable House Company ('TRHCo') does not warrant or take responsibility for the accuracy of the measurements, descriptions, specifications or any other information issued. TRHCo accepts no liability or responsibility for any loss or damage suffered by the recipient of this information arising out of, or in connection with, the use or misuse of this information. This information is general and strictly indicative and has not been prepared for the use by any specific recipient and may not fully reflect their needs. Do not scale off drawings. The recipient is responsible for their own due diligence and for verifying the correctness and completeness of any information issued.

© COPYRIGHT of The Relocatable House Co. Ltd



75 Curly Mcleod Way, Te Manga, Mount Maunganui
 62 Lunn Ave, Mount Wellington, Auckland
P: 0508 473 562
E: info@relocatablehouses.co.nz
W: www.relocatablehouses.co.nz

Need help with your design & council consents?

Here is a selection of some of the things we can do to help you add value to your property:

- Architectural Design Services
- Additions and Alterations
- Building Consents
- Resource Consents
- On-site Shifts
- House Repiling

Don't be afraid of all that paperwork anymore!

0508 4 RELOCATE
relocatablehouses.co.nz



The Relocatable House Co.
Relocating houses, creating new homes.



Have land and wondering where to start?
FREE 20 minute consultation*
Visit relocatablehouses.co.nz/appointment to book!

*T&Cs apply. Visit the above link for more information.