

# New Transportable 3 Bedroom House






ID: BOPTGA01 - White Joinery

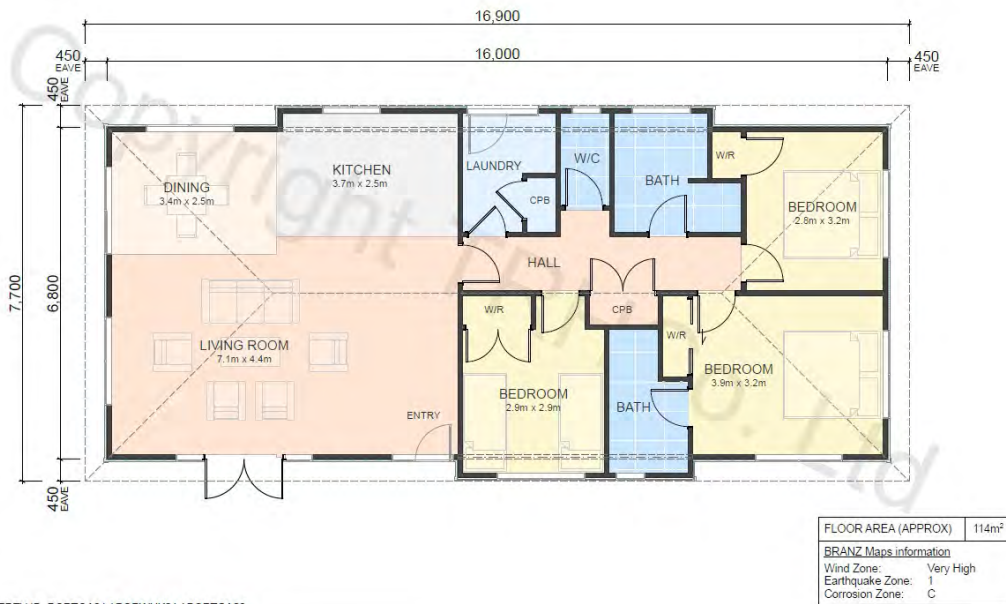
BOPWHK01 - Dark Grey Joinery

BOPTGA02 Light Grey Joinery

A smart layout, perfect for you and your family! This spacious 3 Bedroom house offers open-plan living and space for 3 large bedrooms, family bathroom and en-suite.

This house comes with CCC\* but leaves the finishing touches for the buyer to complete to their tastes (please see exclusions)

-  114m<sup>2</sup>
-  3 Bedroom
-  2 Bathroom
-  Length 16.9m
-  Width 7.7m



PROPERTY ID: BOPTGA01 / BOPWHK01 / BOPTGA02



## FEATURES

- Corrugated steel roofing with Thermakraft 215 underlay
- Primed timber weatherboard exterior
- Fully insulated with double glazed joinery
- Built for 'Very High' wind zone
- Fully lined (gib-board)
- Electrics & Plumbing connected

## EXCLUSIONS

- Gib-stopping and Internal/External Paint
- Fixed floor coverings
- Underfloor insulation
- Bathroom install & fixtures<sup>^</sup>
- Kitchen install & fixtures<sup>^</sup>
- Internal door handles
- Curtain Rails & Curtains
- Downpipes

<sup>^</sup>Electrical & Plumbing plans can be provided

 **\$158,500 incl GST**

Moving costs and connection to services are excluded  
This house is a one-piece shift

05084RELOCATE(0508473562)  
INFO@RELOCATABLEHOUSES.CO.NZ  
Version 20201215



\*Code of Compliance on this house is a council issued document, for all work completed on the dwelling to the point of removal from site. Final CCC will still be required once the house is relocated to its final destination, including all fixtures fitted, services connected and final decking/steps constructed.

